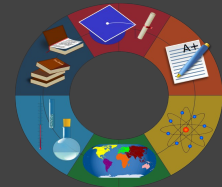




October 9, 2024
Special Education Parent Advisory Council



What is SEPAC?



SEPAC is a parent group facilitated by special education educators providing support to parents of students with IEP's and 504's. As educators our goal is to support and provide resources at our meetings to guide families and students in the special education process.

We host several meetings throughout the school year and we welcome feedback from our parents.

We are looking for several parent volunteers from each grade level to develop and support the SEPAC program

Please contact us or send an email with your ideas and suggestions for future meetings.

SEPAC Committee Members

We welcome feedback, ideas and suggestions!

Dr. Patricia Jeter, Director of Student Related Services

Ms. Patricia Schaffer, Supervisor of Student Related Services

Stephanie Dias, School Psychologist

973-412-2228 sdias@essextech.org

Suzanne Sabatino, Transition Coordinator

973-412-2225 ssabatino@essextech.org





SEPAC Future Meeting Topics & Dates

Nov 18 - NJDVRS presentation

Dec 18 - TBA

Jan 15- NJ4S presentation on *Social Media and Human Trafficking*

Feb 5- TBA

Mar 19- TBA

April 2- TBA

May 7- TBA

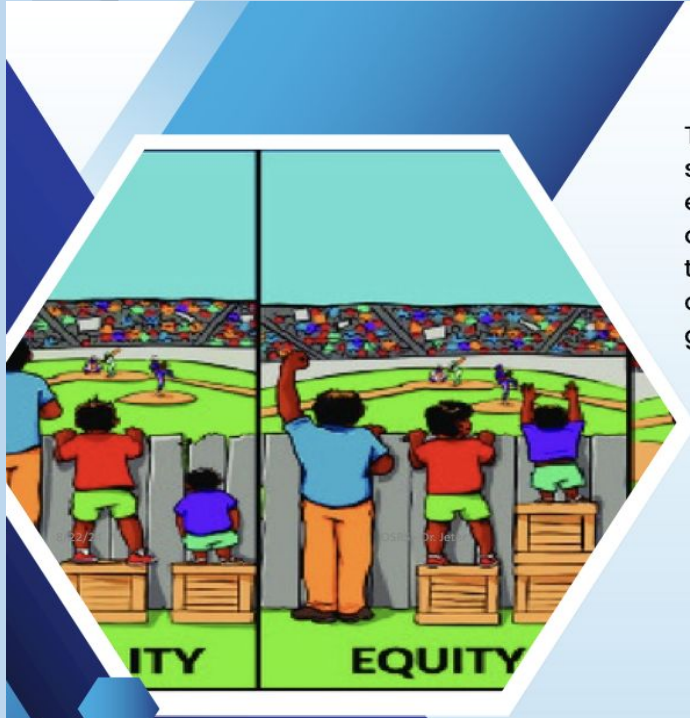
We are always looking for ideas and suggestions for presentations, feel free to share or send us an email.

What would you like to learn about?



Dr. Clark-Jeter
Director of Student-Related Services

Office of Student-Related Services 2024-2025 Goals



MISSION STATEMENT

The Office of Student-Related Services' mission is to enhance all students' academic, social, and mental well-being by ensuring equity and inclusion, equipping students with essential resources, and fostering the knowledge and decision-making skills necessary to become highly motivated, goal-oriented, mindful, and proactive citizens of noble character in a multicultural and ever-changing global society.

2024-2025 GOALS

Increased Student Outcomes

Improve teaching and learning practices for specialized populations to support increased student outcomes on local, state, and national assessments.

Advance Communication

Advance communication to provide students with the most effective support and services to ensure their safety and well-being.

Collaborative Leadership

Increase collaboration and leadership capacity of OSRS staff to implement student services more efficiently and effectively..



GOALS TO INCREASE STUDENT OUTCOMES

- Improve Student Attendance
- Ensure Readiness for Graduation
- Prepare Students for State and Life-long Assessments
- Help Students Enjoy Life - Decrease Depression and Anxiety

2024-2025 Chronic Absenteeism

Dist	September '23			Oct '23			Nov '23			Dec '23			Jan '24			Feb '24			March '24			April '24			May '24			June '24		
Sch	# Stds	# Chr Abs	% Chr Abs	# Stds	# Chr Abs	% Chr Abs	# Stds	# Chr Abs	% Chr Abs	# Stds	# Chr Abs	% Chr Abs	# Stds	# Chr Abs	% Chr Abs	# Stds	# Chr Abs	% Chr Abs	# Stds	# Chr Abs	% Chr Abs	# Stds	# Chr Abs	% Chr Abs	# Stds	# Chr Abs	% Chr Abs	# Stds	# Chr Abs	% Chr Abs
Asian	18	0	0.0	18	1	5.6	18	0	0.0	18	0	0.0	18	0	0.0	18	0	0.0	18	0	0.0	18	0	0.0	18	0	0.0	18	0	0.0
Bk	874	99	11.3	864	78	9.0	863	69	8.0	862	56	6.5	860	64	7.4	854	73	8.5	853	59	6.9	853	50	5.9	853	52	6.1	853	76	8.9
His	1080	119	11.0	1083	80	7.4	1082	75	6.9	1085	68	6.3	1085	70	6.5	1084	82	7.6	1083	64	5.9	1081	56	5.2	1080	60	5.6	1080	91	8.4
Ind	2	0	0.0	2	0	0.0	2	0	0.0	2	0	0.0	2	0	0.0	2	0	0.0	2	0	0.0	2	0	0.0	2	0	0.0	2	0	0.0
Mult	47	8	17.0	47	3	6.4	47	10	21.3	47	9	19.1	47	6	12.8	47	9	19.1	47	6	12.8	47	7	14.9	47	7	14.9	47	7	14.9
P/Is	3	0	0.0	3	0	0.0	3	0	0.0	3	0	0.0	3	0	0.0	3	0	0.0	3	0	0.0	3	0	0.0	3	0	0.0	3	0	0.0
Wh	26	4	15.4	26	0	0.0	26	0	0.0	27	0	0.0	27	0	0.0	27	0	0.0	27	1	3.7	27	0	0.0	27	0	0.0	27	0	0.0
ED	1151	164	14.2	1581	117	7.4	1578	115	7.3	1579	104	6.6	1576	104	6.6	1569	126	8.0	1567	94	6.0	1566	88	5.6	1567	93	5.9	1567	137	8.7
SPED	238	33	13.9	237	26	11.0	235	20	8.5	235	22	9.4	234	21	9.0	233	28	12.0	233	24	10.3	232	21	9.1	232	18	7.8	232	24	10.3
EL	133	9	6.8	141	5	3.5	141	7	5.0	142	5	3.5	142	6	4.2	161	9	5.6	161	5	3.1	161	6	3.7	161	6	3.7	161	10	6.2
All	2050	230	11.2	2043	162	7.9	2041	154	7.5	2044	133	6.5	2042	140	6.9	2035	164	8.1	2033	130	6.4	2031	113	5.6	2030	119	5.9	2030	174	8.6

AFTER SCHOOL ENRICHMENT

GRADE 9 REQUIRED PARTICIPATION

MAP ASSESSMENT		FALL NOVEMBER 7- FEBRUARY 7			WINTER FEBRUARY 10 - MAY 16			SPRING SUMMER ENRICHMENT		
CONTENT	Grade	LO	AV	HI	LO	AV	HI	LO	AV	HI
MATH	9	<221	221-242	>242	<224	224-245	>245	<225	225-246	>246
READING	9	<214	214-234	>234	<216	216-235	>235	<216	216-236	>236
LANGUAGE	9	<213	213-229	>229	<214	214-230	>230	<215	216-232	>231



AFTER SCHOOL ENRICHMENT GRADE 10 REQUIRED PARTICIPATION

NJSLA 2024		Levels of Performance											
MATH OR LANGUAGE ARTS	10	Lvl 1	% Lvl 1	Lvl 2	% Lvl 2	Lvl 3	% Lvl 3	Lvl 4	% Lvl 4	Lvl 5	% Lvl 5	Lvl 4-5	%Lvl 4-5



AFTER SCHOOL ENRICHMENT GRADE 11 REQUIRED PARTICIPATION

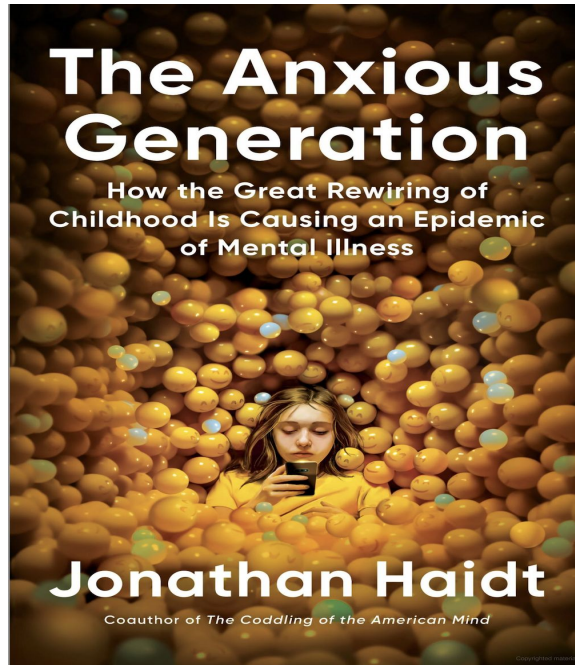
PSAT NMSQT	EBRW	Met Bmark 430	MTH SECT	Met Bmark 480
------------	------	---------------	----------	---------------

<u>EBRW</u>	Ranges
≤ 400	Not Yet Approaching
$>400-420$	Approaching
≥ 430	Meets/Exceeds

<u>MATH</u>	Ranges
≤ 450	Not Yet Approaching
$>450-470$	Approaching
≥ 480	Meets/Exceeds

Anxious Generation

<https://www.youtube.com/watch?v=euoNcG3zpFE>





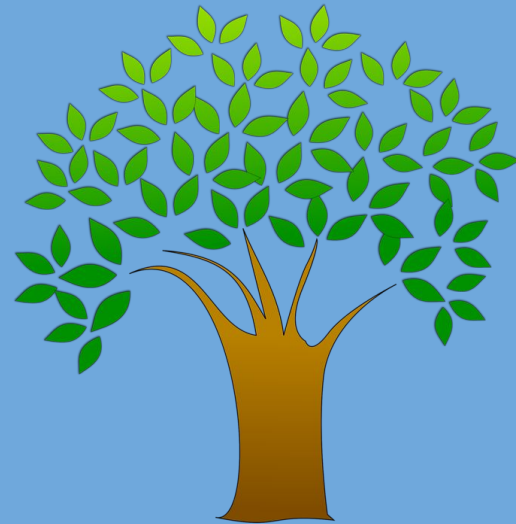
PARENTAL SUPPORT

WHAT CAN PARENTS DO TO HELP US PREPARE THEIR CHILD FOR COLLEGE OR A CAREER?

1. Ensure students attend school daily and on-time
2. Limit student's time on video games, cell phones, and computers
3. Ensure student gets sleep
4. Ensure student completes homework assignments
5. Ensure student logs on for assigned after-school enrichment classes
6. Monitor student grades
7. Study the Research about the impact of phones and video games on students
<https://www.youtube.com/watch?v=euoNcG3zpFE>

Who is on the ECST Child Study Team?

- ❑ Learning Disabilities Teacher Consultant
- ❑ School Social Workers
- ❑ School Psychologists
- ❑ Speech Language Specialists
- ❑ Transition Coordinator



Learning Disabilities Teacher Consultant

- Learning Disabilities Teacher Consultants work with students, teachers and parents to support students with learning disabilities to ensure students succeed academically and socially.
- Conduct comprehensive educational evaluations to identify students strengths and needs.
- Develop and implement Individualized Education Programs (IEPs)
- Collaborate with teachers and administrators to create inclusive learning environments
- Case-manage students with diverse learning needs
- Collaborate with other professionals (school psychologists, speech therapists, social workers and school counselors)
- Monitor student progress and provide accommodations and modifications to help students succeed in the learning environment.



School Social Workers

- Participates as a member of the CST and assists in the evaluation and classifications of students
- Conduct social history assessments to identify students' social, emotional, and behavioral needs.
- Advocate for students' needs and rights within the educational framework.
- Collaborate with teachers and other professionals to gather information for evaluations.
- The CST Social Worker plays a vital role in fostering a supportive and inclusive educational environment, ultimately contributing to the academic and personal success of students with special needs.
- Provide counseling services to students, parents, and staff as needed - make referrals to appropriate community resources



School Psychologists

School Psychologists support students in collaboration with teachers, parents and school staff, to ensure success in school. Specialized training in mental health, learning and behavior.

- Case manage students with IEPs
- School based counseling services
- Provide behavioral supports
- Provide social/emotional support
- Conduct cognitive assessments as part of IEP development
- Advocate for students
- Collaborate with the other members of the Child Study Team on evaluations

Speech Language Specialist

The speech language specialist (SLS) will test your child's speech and language skills and decide if your child needs treatment. Your child may have difficulties in the following areas of communication:

speech sounds, language and literacy, social communication, cognitive communication, stuttering, voice, and swallowing.

Reading,, writing, gesturing, listening, and speaking are all forms of language. The better the communication skills are,, the better the school performance will be.





Transition Coordinator

The Transition Coordinator

supports students and their families during the application process to our schools and as they transition during their freshman year.

supports students with IEPs and their families in obtaining services necessary to transition from high school to a post-secondary setting, such as college, trade school, apprenticeship programs, employment, or long-term support.

support the case manager with the IEP postsecondary goal.

support students and their families in the referral, application, and eligibility process for services such as NJDVRS and DDD when applicable.



PowerSchool and Schoology Access for Families

Need your PowerSchool Login?

Reach out to your School Counseling Administrative Professional

Payne Tech -	Ms. Salvante	jsalvante@essextech.org
	Ms. Agosto	aagosto@essextech.org
Newark Tech -	Ms. Williams	awilliams@essextech.org
West Caldwell -	Ms. George	tgeorge@g.essextech.org

Contact Information for Payne Tech

ESSEX COUNTY DONALD M. PAYNE TECH ASSIGNMENTS

Child Study Team Case Managers

Stephanie Dias, School Psychologist Grade 10 & 12(A to E) sdias@essextech.org 2228

Mary Idebaneria, Learn Disabilities Teacher Consultant Grade 9 & 12(F to Z)
midebaneria@essextech.org 2226

Jenae Goodson, School Social Worker Grade 11th jgoodson@essextech.org 2084

School Nurses

Amanda Gordon RN, BS School Nurse 9-12 agordon@essextech.org 2254

Dionne Pace RN, BSN, CSN, BS School Nurse 9-12 dpace@essextech.org 2214

Speech Language Therapist

Dawn Schweitzer 9-12 dschweitzer@essextech.org 7346

School Social Worker/504

Jenaè Goodson jgoodson@essextech.org 2084 students with last name A-L

Cynthia Martinez cmartinez@essextech.org 2257 students with last name M-Z



Contact Information for West Caldwell

Child Study Team Case Managers

Mirlene Nazaire, School Psychologist 9 & 11 (FT & ST) mnazaire@essextech.org 2244

Mari-Elena Acevedo, School Social Worker 10 & 12 macevedo@essextech.org 2238

Christine Ekkers, Learn Disabilities Teacher Consultant cekkers@essextech.org 2245

School Nurses

Bonnie Rogers RN, BSN, CSN, BS brogers@essextech.org 2234

Speech Language Therapist

Alexandria Chaves, achaves@essextech.org 2235 grades 9-12

School Social Worker/SAC/504 Coordinator

Alghashiyah Murray, amurray@essextech.org 2269 grades 9-12



Contact Information for Newark Tech

Child Study Team Case Managers

Dr. Sharon Spence, Learn Disabilities Teacher Consultant, 9-12 sspence@essextech.org

Jaralis Nivar, School Social Worker, 9-12 jnivar@essextech.org

Speech Language Therapist

Dawn Schweitzer 9-12 dschweitzer@essextech.org 7346

School Nurses

Christina Merritt, MSN RN, CSN, BS cmerritt@essextech.org 2275

School Social Worker/SAC/504 Coordinator

Sonia Mulero, School Social Worker 9-12 smulero@essextech.org 2265

**ESSEX COUNTY SCHOOLS OF TECHNOLOGY****OFFICE OF STUDENT-RELATED SERVICES**

498-544 West Market Street - Newark, New Jersey, 07107 - Office: (973) 412-2203 - Fax: (973) 350-0624

**ECST 2024-2025 DISTRICT ASSESSMENT CALENDAR**

STATE/FED	DISTRICT	ADMISSIONS	COLLEGE BOARD
ASSESSMENTS		GRADE(S)	ADMINISTRATION WINDOW
ECST DISTRICT DIAGNOSTIC ASSESSMENTS		10-12	SEPTEMBER 9-20, 2024
MAP ASSESSMENT 1 DIAGNOSTIC ASSESSMENT		9	SEPTEMBER 16-27, 2024
NEW JERSEY GRADUATION PROFICIENCY ASSESSMENT (NJGPA) SENIORS FALL ADMINISTRATION		12	OCTOBER 7-11, 2024 MAKEUP: OCTOBER 15-18, 2024
ECST DIAGNOSTIC ADMISSIONS ASSESSMENT 1		8	OCTOBER 19, 2024
WIDA ADMISSIONS SCREENER TEST 1		8	OCTOBER 26, 2024
2024 PSAT/NMSQT SCHOOL DAY		10 & 11	OCTOBER 30, 2024
ECST DIAGNOSTIC ADMISSIONS ASSESSMENT 2		8	NOVEMBER 16, 2024
NEW JERSEY STUDENT LEARNING ASSESSMENT (FALL) MATH		9 OR ABOVE	PENDING
SCHOOL FAIR		8	NOVEMBER 23, 2024
PORTFOLIO APPEALS		9	PENDING
AAPPL ASSESSMENT (SEAL OF BILITERACY)		12	DECEMBER 9-10, 2024
ECST DIAGNOSTIC ADMISSIONS ASSESSMENT 3		8	DECEMBER 7, 2024
WIDA ADMISSIONS SCREENER TEST 2		8	DECEMBER 14, 2024
ADMISSIONS INTERVIEW		8	JANUARY 15-MARCH 29, 2025
ECST MIDTERM/SEMESTER FINAL EXAMS		9-12	JANUARY 16-22, 2025
MAP ASSESSMENT 2		9	JANUARY 27-31, 2025
ECST DIAGNOSTIC ADMISSIONS ASSESSMENT 4		8	JANUARY 25, 2025
WIDA ADMISSIONS SCREENER TEST 3		8	FEBRUARY 1, 2025
ECST DIAGNOSTIC ADMISSIONS ASSESSMENT 5		8	FEBRUARY 22, 2025
ECST DIAGNOSTIC ADMISSIONS ASSESSMENT 6		8	MARCH 8, 2025
WIDA ADMISSIONS SCREENER TEST 4		8	MARCH 15, 2025
NJGPA SPRING ADMINISTRATION ELA & MATH		11	PENDING
ACCESS & ALTERNATE ACCESS FOR ELLS		9-12	PENDING
ECST QUARTER 3 BENCHMARK ASSESSMENTS (SGO)		9-12	MARCH 24-28, 2025
MAP ASSESSMENT 3 (SGO)		9	APRIL 28-MAY 1, 2025
2024 SAT SCHOOL DAY (COLLEGE BOARD)		11	APRIL 16, 2025
ECST SPRING BREAK		9-12	APRIL 21-25, 2025
+ AP BIOLOGY		12	MAY 5, 2025 (AM)
+ AP US GOVERNMENT & POLITICS		12	MAY 6, 2025 (PM)
+ AP CHEMISTRY		12	MAY 6, 2025 (AM)
+ AP ENGLISH LITERATURE & COMP		11	MAY 7, 2025 (AM)
+ AP COMPARATIVE GOVERNMENT & POLITICS		12	MAY 7, 2025 (PM)
+ AFRICAN AMERICAN STUDIES		12	MAY 8, 2025 (AM)
+ AP WORLD HISTORY: MODERN		12	MAY 8, 2025 (PM)
+ AP 2-D & 3-D ART & DESIGN & DRAWING		12	MAY 9, 2025 (8 PM DEADLINE)
+ AP U.S. HISTORY (DIGITAL OPT)		10-12	MAY 9, 2025 (AM)
+ AP CALCULUS		12	MAY 12, 2025 (AM)
+ MUSIC THEORY		12	MAY 12, 2025 (AM)
+ AP PRECALCULUS		11-12	MAY 13, 2025 (AM)
+ AP ENGLISH LANGUAGE & COMP		11	MAY 14, 2025 (AM)
+ AP SPANISH LANG & CULTURE		11-12	MAY 15, 2025 (AM)
+ AP PHYSICS		12	MAY 16, 2025 (AM)
DYNAMIC LEARNING MAPS (DLM) ELA, MATH & SCI		11	PENDING
NJSLA-ELA & MATH (FED ACCT)		9 OR ABOVE	PENDING
NJSLA-SCIENCE		11	PENDING
FINAL EXAMS		9-12	JUNE 5-11 MAKE-UP: JUNE 12-13
NJGPA SUMMER ADMINISTRATION		RISING 12	PENDING



ESSEX COUNTY SCHOOLS OF TECHNOLOGY

OFFICE OF STUDENT-RELATED SERVICES GUIDANCE OFFICE

498-544 West Market Street • Newark, New Jersey, 07107 • Office: (973) 412-2203 • Fax: (973) 350-0624



2024-2025 SCHOOL COUNSELING DEPARTMENT STAFF ASSIGNMENTS & CONTACT INFORMATION

Dr. Patricia Clark-Jeter		<i>Director of Student-Related Services</i>		<i>Ext.2230 District 504 Coordinator</i>		<i>Director</i>	<i>Supervisor</i>
				<i>Director</i>		<i>Supervisor</i>	
<i>Patricia C. Schaffer</i>		<i>Supervisor of Student-Related Services</i>		<i>pschaffer@essextech.org</i>		<i>2298</i>	
<i>Suzanne Sabatino</i>		<i>CTE Evaluator/Transition Coordinator</i>		<i>ssabatino@essextech.org</i>		<i>2225</i>	
<i>Johanna Salvante</i>		<i>OSRS Administrative Assistant</i>		<i>jsalvante@essextech.org</i>		<i>2213</i>	
<i>Ronnie Peguero</i>		<i>Special Education Administrative Assistant</i>		<i>rpeguero@essextech.org</i>		<i>2219</i>	
OSRS ADMINISTRATIVE PROFESSIONALS							
<i>Antonella Agosto</i>	<i>Administrative Assistant</i>	<i>Payne Tech Campus</i>		<i>aagosto@essextech.org</i>		<i>(973) 412-2203 Ext. 2215</i>	
<i>Toni George</i>	<i>Administrative Assistant</i>	<i>West Caldwell Tech Campus</i>		<i>tgeorge@g.essextech.org</i>		<i>(973) 412-2205 Ext. 2232</i>	
<i>Arianna Williams</i>	<i>Administrative Assistant</i>	<i>Newark Tech Campus</i>		<i>awilliams@essextech.org</i>		<i>(973) 412-2204 Ext. 2280</i>	
ESSEX COUNTY DONALD M. PAYNE TECH ASSIGNMENTS							
<i>Staff Name</i>	<i>Role</i>	<i>Grades</i>	<i>Last Name Begins with The Letter</i>	<i>Email Address</i>	<i>Extension</i>		
<i>Denise Calimano</i>	<i>School Counselor</i>	<i>9-12</i>	<i>A - C</i>	<i>dcalimano@essextech.org</i>	<i>2218</i>		
<i>Sandra Roberts</i>	<i>School Counselor</i>	<i>9-12</i>	<i>D - G</i>	<i>sroberts@essextech.org</i>	<i>2216</i>		
<i>Isnery Marrero</i>	<i>School Counselor</i>	<i>9-12</i>	<i>H - M</i>	<i>imarrero @essextech.org</i>	<i>2256</i>		
<i>Karen Leach</i>	<i>School Counselor</i>	<i>9-12</i>	<i>N - R</i>	<i>kleach @essextech.org</i>	<i>2271</i>		
<i>Katherine Mayorga</i>	<i>School Counselor</i>	<i>9-12</i>	<i>S - Z</i>	<i>kmayorga@essextech.org</i>	<i>2220</i>		
<i>Jenaè Goodson</i>	<i>School Social Worker/I&RS & 504Coordinator</i>	<i>9-12</i>	<i>A - J</i>	<i>jgoodson@essextech.org</i>	<i>2084</i>		
<i>Cynthia Martinez</i>	<i>School Social Worker/I&RS & 504Coordinator</i>	<i>9-12</i>	<i>K - Z</i>	<i>ctoro@essextech.org</i>	<i>2257</i>		
ESSEX COUNTY NEWARK TECH ASSIGNMENTS							
<i>Benita Negron</i>	<i>School Counselor</i>	<i>9-12</i>	<i>A - F</i>	<i>bnegron@essextech.org</i>	<i>2276</i>		
<i>Toni Ann Percontino</i>	<i>School Counselor</i>	<i>9-12</i>	<i>G - N</i>	<i>tpercontino@essextech.org</i>	<i>2274</i>		
<i>Andrew Turner</i>	<i>School Counselor</i>	<i>9-12</i>	<i>O - Z</i>	<i>aturner@essextech.org</i>	<i>2279</i>		
<i>Sonia Mulero</i>	<i>School Social Worker/I&RS & 504Coordinator</i>	<i>9-12</i>	<i>ALL</i>	<i>smulero@essextech.org</i>	<i>2265</i>		
ESSEX COUNTY WEST CALDWELL TECH ASSIGNMENTS							
<i>Emily Arcangelo</i>	<i>School Counselor</i>	<i>9-12</i>	<i>A - L</i>	<i>earcangelo@essextech.org</i>	<i>2261</i>		
<i>Jennifer DaSilva</i>	<i>School Counselor</i>	<i>9-12</i>	<i>M - Z</i>	<i>jdasilva@essextech.org</i>	<i>2278</i>		
<i>Alghashiyah Murray</i>	<i>School Social Worker/I&RS & 504Coordinator</i>	<i>9-12</i>	<i>ALL</i>	<i>amurray@essextech.org</i>	<i>2269</i>		
STUDENT ASSISTANCE COORDINATOR							
<i>Alghashiyah Murray</i>	<i>Student Assistant Coordinator</i>	<i>District</i>	<i>amurray@essextech.org</i>				<i>2269</i>
STUDENT PEER MENTOR (SPM) DISTRICT COORDINATOR							
<i>LaDonna Young</i>	<i>SPM Coordinator Consultant</i>	<i>District</i>	<i>lyoung@essextech.org</i>				

ESSEX COUNTY SCHOOLS OF TECHNOLOGY

OFFICE OF STUDENT-RELATED SERVICES

498-544 West Market Street • Newark, New Jersey, 07107 • Office: (973) 412-2203 • Fax: (973) 350-0624



2024-2025 OSRS HEALTH OFFICE, CHILD STUDY TEAM, SSW/I&RS/504 COORDINATOR & SHARED-TIME STAFF ASSIGNMENTS & CONTACT INFORMATION

Dr. Patricia Clark-Jeter		Director of Student-Related Services		pjeter@essextech.org		(973) 412-2203	
		District 504 Coordinator				Ext.2230	
Patricia C. Schaffer	Supervisor of Student-Related Services			pschaffer@essextech.org		2298	
Suzanne Sabatino	CTE Evaluator/Transition Coordinator			ssabatino@essextech.org		2225	
Johanna Salvante	OSRS Administrative Assistant			jsalvante@essextech.org		2213	
Ronnie Peguero	Special Education Administrative Assistant SEMI/Special Programs Coordinator			rpeguero@essextech.org		2219	
ESSEX COUNTY DONALD M. PAYNE TECH ASSIGNMENTS							
SUPPORT STAFF NAME		POSITION		ASSIGNMENT		EMAIL ADDRESS	
EXTENSION							
Amanda Gordon RN, BSN	School Nurse			9-12		agordon@essextech.org	
2254							
Dionne Pace RN, BSN, CSN, BS	School Nurse			9-12		dpace@essextech.org	
2214							
Stephanie Dias	School Psychologist			10 & 12(A to E)		sdias@essextech.org	
2228							
Mary Idebaneria	Learn Disabilities Teacher Consultant			9 & 12(F to Z)		midebaneria@essextech.org	
2226							
Johnslynn Maize-Daniels	CST School Social Worker			11		TBA	
TBA							
Dawn Schweitzer	Speech Language Pathologist			9-12		dschweitzer@essextech.org	
7346							
Jenaè Goodson	School Social Worker/I&RS & 504Coordinator			A-J		jgoodson@essextech.org	
2084							
Cynthia Martinez	School Social Worker/I&RS & 504Coordinator			K-Z		cmartinez@essextech.org	
2257							
ESSEX COUNTY NEWARK TECH ASSIGNMENTS							
Christina Merritt, MSN, RN, CSN	School Nurse			9-12		cmerritt@essextech.org	
2275							
Stephanie Dias	PT School Psychologist			9-12		sdias@essextech.org	
2228							
Joralis Nivar	CST School Social Worker			9-12		jnivar@essextech.org	
2223							
Dr. Sharon Spence	Learn Disabilities Teacher Consultant			9-12		sspence@essextech.org	
2222							
Dawn Schweitzer	Speech Language Pathologist			9-12		dschweitzer@essextech.org	
7346							
Sonia Mulero	School Social Worker/I&RS & 504Coordinator			9-12		smulero@essextech.org	
2265							
ESSEX COUNTY WEST CALDWELL TECH FULL-TIME (FT) & SHARED-TIME (ST)							
Bonnie Rogers RN, BSN, CSN, BS	School Nurse			9-12		brogers@essextech.org	
2234							
Mirlene Nazaire	CST School Psychologist			9 & 10 INC, FT, & ST		mnazaire@essextech.org	
2244							
Mari-lena Acevedo	CST School Social Worker			11 & 12 INC, FT, & ST		macevedo@essextech.org	
2238							
Christine Ekkers	CST Learn Disabilities Teacher Consultant			Transition Academy		cekkers@essextech.org	
2245							
Alexandria Chaves	Speech Language Pathologist			9-12		achaves@essextech.org	
2235							
Alghashiyah Murray	School Social Worker/District SAC/I&RS & 504Coordinator			9-12		amurray@essextech.org	
2269							

Transportation Contact

Any concerns related to transportation please reach out

Ronnie Peguero - Administrative Assistant

973-412-2219

rpeguero@essextech.org





Please take this survey for attendance and input about our programs:

<https://forms.gle/PjxxbDgnKceG4ixq7>

Thank you for joining us! We look forward to a successful school year!

